

# CNG

## Compressed Natural Gas

Conventional Dash Mounted Fuel Level Gauge with Low Level Warning Light... Standard

Front Bumper Fill Connections Available as an Option

Factory Installed, Warrantied and Supported CNG Systems in Both BTC and Saddle Mount Configurations from 45 DGE to 75 DGE

Compressed Natural Gas powered trucks run cleaner and quieter and can equate to lower fuel costs and lower maintenance costs over the life of the vehicle. ■

Fuel Management Module (FMM) Integrated into all BTC and Saddle Mount Systems

NGV-1 and Transit Fill Quick Connect Fuel Fill Connections Located in FMM

18"

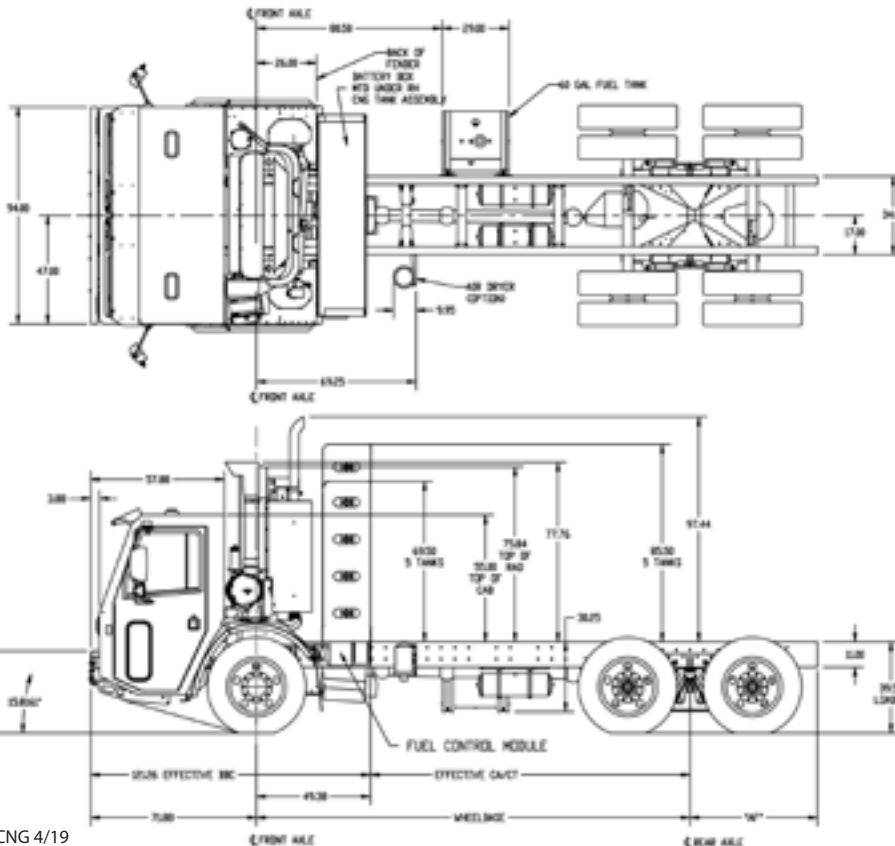
True Low Entry – 18" Step in Height on BOTH Sides

Committed to Cleaner, Quieter, More Cost Effective Options



# CNG Compressed Natural Gas

All Crane Carrier Chassis models are available with Compressed Natural Gas (CNG) systems. CNG chassis are factory equipped with Fuel Management Modules (FMM), regulating CNG fuel system pressure, filtration and delivery to engine manufacturer's design recommendations, ensuring proper operation and factory support. Crane Carrier offers behind-the-cab, (BTC) and saddle mount systems in various combinations, configurations and capacities to meet any specific installation and operating requirements. ■



Specifications Subject to Change Without Notice CNG 4/19



**CRANE CARRIER COMPANY**  
*Purpose Built. Quality Driven.*

1951 Reiser Avenue SE • New Philadelphia, OH 44663  
 918.286.2300 • www.cranecarrier.com

- 20 Year Cylinder Service Life, with High Quality and Durable Construction
- Type 4 Cylinder Construction with Aluminum Liners, Carbon Fiber Wrap
- CNG Cylinders are Neck Mounted for Increased Integrity and Serviceability
- Variable Speed Fan Provides Quiet Cab and Increased MPG
- All Aluminum CNG Cabinet Construction with Powder Coated Outer Panels
- Large Silicone Liquid Filled High and Low Pressure System Gauges Located in FMM
- Conventional Dash Mounted Fuel Level Gauge with Low Level Warning Light Standard
- Emergency Shut-off Valve Located in Fuel Control Module, Fill Panel Area
- NGV-1 Quick Connect Fuel Fill Connection is Located in Fuel Control Module
- Front Bumper and RH (Curb) Side Fill Connections are Available as an Option
- Ignition Cut-out (Shut Off) Fuel Fill Connections are Available as Option
- Fuel Control Module Integrated into all Behind the Cab and Saddle Mount Systems
- System Filters and Regulators are Easily Located and Serviceable in FMM's
- CNG Fuel Systems are Factory Installed, Supported and Warrantied